

Biz Insight



INTEGRATE

TARGET

ENHANCE

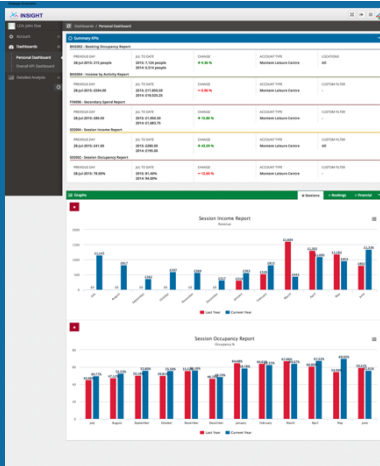
IMPACT

Strategic intelligence to deliver critical KPI's to your operation

Provides your business with insight into your Key Performance Indicators & detailed analysis to expose trends and critical business drivers throughout your organization, contract or center.

Critical insight into business information

Understand and manage intelligence on a simple web based application, with easy access to KPIs from desktop or mobile devices.



FEATURES

Detailed, fast and simple to use:

- Automatic updating of yesterday's figures, monthly comparisons and rolling 24 month trends provide total visibility.
- Administration level allows KPI's to be set and delivered to key personnel centrally through a simple permissions matrix.
- Detailed analysis ensures specific issues or successes can be identified and interventions targeted and tracked dynamically.

Focused operational review:

- Organizational setup allows users to focus on their own KPI's as well as overall company goals and strategic objectives.
- Simple filters aligned to DataHub Standards ensure you are always comparing like for like across your operation.

BENEFITS

- Reduce costs and time associated with creating multiple reports for consolidation to key stakeholders.
- Allows for the development of continuous improvements in data capture, operational efficiency and income generation opportunities.
- Timely and accurate data due to sector standardization as part of the DataHub Data integrity platform and daily automated extracts from your LMS provider.
- Customizable KPI dashboards allowing for departmental specification and contract region or center visibility.
- Helps to identify key markets to review through Geo Impacts to understand how to grow participation and increase revenue generation.

Summary KPIs			
BKG001 - Booking Utilisation Report	PREVIOUS DAY 11-Sep-2016: 0.00%	SEP TO DATE 2016: 1.36% 2015: 0.00%	CHANGE +0.00%
MEM001 - Membership Net Gain Analysis Report	PREVIOUS DAY 11-Sep-2016: 0	SEP TO DATE 2016: -1 2015: 90	CHANGE -101.11%
MEM006 - Membership Income Report	PREVIOUS DAY 11-Sep-2016: £0.00	SEP TO DATE 2016: £529.70 2015: £1,001.10	CHANGE -47.09%
FIN005 - Session Income Report	PREVIOUS DAY 11-Sep-2016: £0.00	SEP TO DATE 2016: £529.70 2015: £1,001.10	CHANGE -47.09%
SES004 - Session Income Report	PREVIOUS DAY 11-Sep-2016: £0.00	SEP TO DATE 2016: £529.70 2015: £1,001.10	CHANGE -47.09%
CR5003 - Course Occupancy Report	PREVIOUS DAY 11-Sep-2016: 0.00%	SEP TO DATE 2016: 0.00% 2015: 10.71%	CHANGE -100.00%
BKG004 - Income by Activity Report	PREVIOUS DAY 11-Sep-2016: £0.00	SEP TO DATE 2016: £0.00 2015: £564.00	CHANGE -100.00%
MEM002 - Live Membership Report	PREVIOUS DAY 11-Sep-2016: 251	TODAY 12-Sep-2016: 251 12-Sep-2015: 276	CHANGE -9.06%
FIN003 - Membership Income Report	PREVIOUS DAY 11-Sep-2016: £0.00	SEP TO DATE 2016: £0.00 2015: £2,439.45	CHANGE -100.00%
FIN006 - Secondary Spend Report	PREVIOUS DAY 11-Sep-2016: £0.00	SEP TO DATE 2016: £0.00 2015: £251.85	CHANGE -100.00%
SES002 - Session Occupancy Report	PREVIOUS DAY 11-Sep-2016: 0.00%	SEP TO DATE 2016: 0.00% 2015: 37.83%	CHANGE -100.00%



Available NOW to all
DataHub Club members

Join the Club for free at DataHubClub.com
or for more information email
info@DataHubClub.com